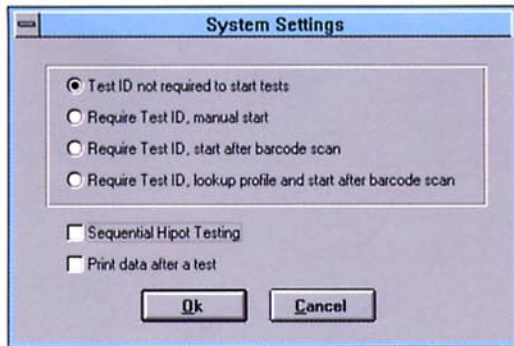
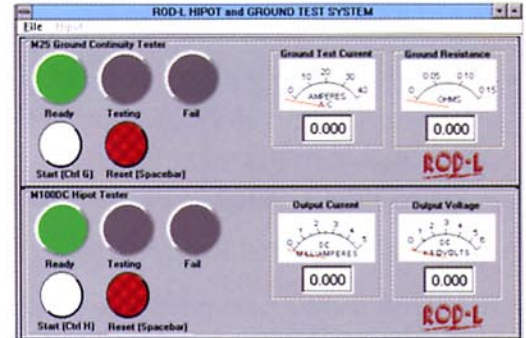


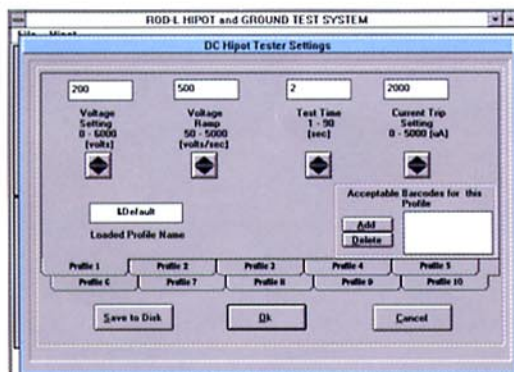
# MC30 Series Safety Test Control Solution

**NEW  
PRODUCT**

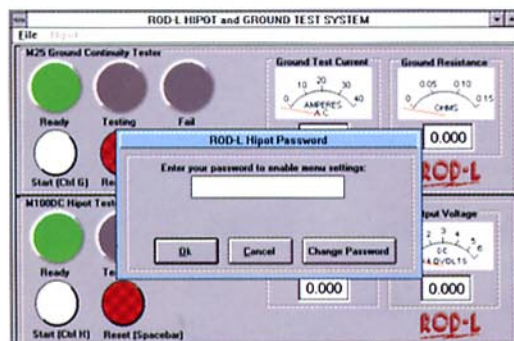
The MC30 Series provides remote control and data acquisition for Rod-L Hipot and Ground Continuity test instruments. Along with an interface cable and Keithley/Metrabyte data acquisition card, all MC30 packages include a ready to use Windows based control program as well as Visual Basic function calls to facilitate in the development of custom applications.



- Control all critical parameters from a computer workstation
- Automatically log and print all test results by barcode data, product type or serial number
- Interface system with barcode scanner and use the scanner to trigger the test cycle



- If desired, use quick keys to easily access different sets of hipot test parameters
- Associate specific test parameters with specific barcodes and automatically access the correct parameters after the product to be tested is scanned



- Password control prevents unauthorized changes of test parameters or procedures
- Use simple Visual Basic Function Calls to build custom software applications

## Equipment Required

### Included in MC30 Series Packages

- Keithley Data Acquisition Board Model 1802ST-DA
- Computer to Test Instrument Interface Cable
- Software
  - Remote Control and Data Acquisition Executable Application Program
  - Visual BASIC Snap In Function Calls

### Additional Required Equipment

- IBM Compatible Computer equipped with 8MB of RAM (Minimum) and Microsoft Windows Version 3.1 or higher

### *Hipot and Ground Continuity*

- M150AC Hipot Tester, *or*
- M100DC Hipot Tester (Equipped with Option 19 Digital and Analog Remote), *and*
- M10, M25, M30 or M35 High Current Ground Continuity Tester (Equipped with Opt. 19)

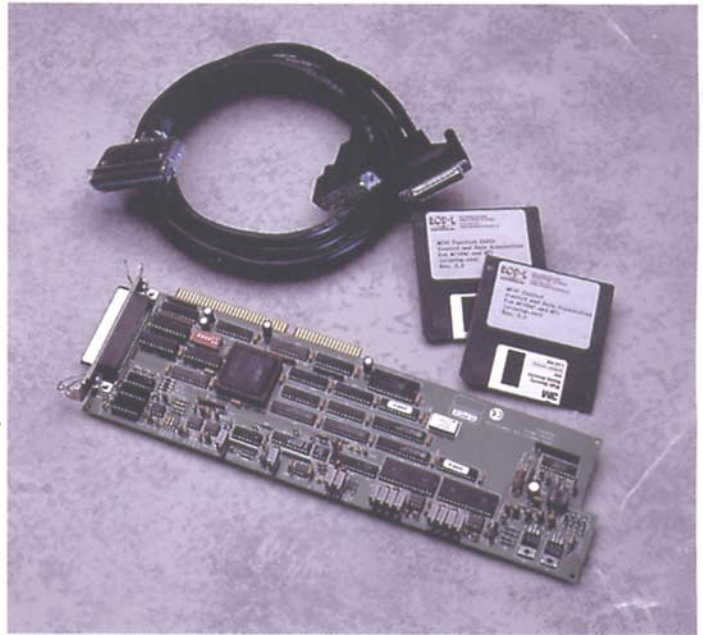
### *Hipot Only*

- M150AC Hipot Tester, *or*
- M100DC Hipot Tester (Equipped with Option 19 Digital and Analog Remote)

## Models

MC30 – AC hipot (M150AC) and High current ground (M25)

MC31 – DC hipot (M100DC) and High current ground (M25)



**ROD-L**  
**ELECTRONICS, INC.**